

St. Peter's Epistle



November 2024

St. Peter's Evangelical Lutheran Church
145 S. 6th Street, Waterford, WI 53185

Upcoming Events

Movie Night
November 8

Voters' Meeting
November 10

Men's Bible Study
November 16

Be sure to follow us on facebook
and visit our website at
www.stpeterswaterford.com

Sign up for updates by emailing
Pastor Conradt and asking to be
put on the list.

CHURCH

Telephone: 262-534-3639

Rev. Joshua P.H. Conradt, Pastor
pastorconradt@stpeterswaterford.com

Church Office
secretary@stpeterswaterford.com

PRESCHOOL

Telephone: 262-534-6066

Mr. Melvin Beversdorf, Director
director@stpeterswaterford.com

From the Desk of Pastor Conradt

Classical Education: Part I of III

The following article was written by Cheryl Lowe and her daughter-in-law Leigh Lowe and appeared in the Spring 2024 edition of *The Classical Teacher* published by Memoria Press. It is a good defense of Classical Education; a model that is being returned to by many Lutheran schools and a model that we use in our own home. Because of the length it will be broken into three parts.

"Is a classical education still relevant? Is it worth the time and the effort, or should our students be studying the modern world and modern languages, preparing for modern jobs? Every one of us wants to give our students the best possible education-but what is the best? The latter half of the twentieth century has given us the answers to these questions. The last century has been an attempt to educate students without Latin and the classics. It has not worked. We have seen a complete meltdown in education so shocking that there are no meaningful standards left.

"Classical education has been around for 2,500 years, and though it has changed and evolved over time the essential core has always remained the same. It was invented by the Greeks, imitated and expanded upon by the Romans, preserved by the monks of the Middle Ages, and finally experienced a rebirth in the Renaissance that continued up to the first half of the twentieth century. We are not at liberty to redefine classical education or to let it die.

"Latin and the classics provide training in language, logic, and critical thinking that cannot be duplicated by any other method. They give structure, depth, and meaning to a curriculum. There is no adequate substitute for the study of Latin and the classics. A classical Christian education gives students the background needed to understand the modern world. Without this background people are tossed about by any new idea, for they have been given no wisdom from the past to prepare them to act wisely in the difficult task of discerning the present and the future.

"At Memoria Press we have built our curriculum upon three foundational pillars: Christian, Classical, and Traditional. We believe that an education built upon these pillars has the ability to form the character of each student-to instill discipline, teach virtue, and nourish faith.

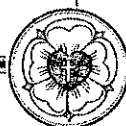
I. CHRISTIAN

"A classical Christian education upholds traditional Christian morality, orthodox doctrine, and the divine inspiration of Scripture. Christian faith is incorporated into the daily life of students through school prayers that begin and end each day and Latin prayers and songs that are practiced from the primary through the upper school years..."

To be continued...

In Christ,

Pastor Conradt



Lutheran Church

Missouri Synod

OFFICIAL ACTS



BAPTISMS

Chester David Hayden
08/26/2024 09/15/2024

Hazel Elizabeth Handeland
10/06/2024 10/20/2024

Holly Rose Handeland
01/06/1988 10/20/2024



ADULT CONFIRMATION

Holly Rose Handeland
10/20/2024

NEW MEMBERS



Transfer in:

Melvin, Jaclyn, Charolotte, Pearl, Willa, Boaz, and Rose Beversdorf

MEMBERS LEAVING

By Release:

Robert & Jody Farchione

Removed:

Elsie Farchione
Frank Farchione



DEATHS

Jerald Winkelman
7/28/1946 10/2/2024



DON'T FORGET!
TURN YOUR CLOCKS BACK
Sunday, November 3, 2024

Newsletter Due Dates

December

November 21st



FAMILY MOVIE NIGHT



The Board of Parish Education continues to host "Family Movie Night" at 6:00pm in the parish hall. The November movie is *Pete's Dragon*. There will be some time for "open gym" after the movie. We will have popcorn and juice; attendees can sign up to bring a snack to share.



LADIES AID/LWML

Join us for Christian fellowship / Bible Study every second Monday of the month here at St. Peter's Lutheran Church. We meet at 11:00 a.m. for Bible Study then a short meeting followed by your own bag lunch. Dessert and coffee are provided. Come join us!



SENIOR FRIENDSHIP GROUP

Attention all 55+ members (men & women) and your friends!! Join us for Christian fellowship and Bible Study every second and fourth Monday of the month here at St. Peter's Lutheran Church. Meetings begin at 11:00 a.m. for Bible Study then a short meeting followed by your own bag lunch. Dessert and coffee are provided. Afterwards, those who want to can enjoy cards, bingo, or other planned seasonal activities. Come join us!



SENIOR GROUP CHRISTMAS PARTY



The last meeting of this year will be December 9th. We will have a short business meeting at 11:00 am, followed by our Christmas luncheon.

Please put on your best (or worst) Christmas sweater as there will be a prize for one of you. We will be playing Take-Away Bingo, and the entry fee is a wrapped "white elephant" present. Hope to see you all there!



TURKEY DINNER UPDATE

The numbers are in!! Dine-In served 212 meals, while Carry-Out prepared 346 "to-go" meals. The final financial totals will be included in the Annual Report. Thank you all again for the time you provided for our annual turkey dinner. We still had many opportunities for those of you that felt left out of all the fun ~ we look forward to seeing you next year.

ALL ABOARD THE DTC POLAR EXPRESS!

Save the date: Saturday, December 14th, 2024. St. Peter's will be one of the stops for the "unforgettable holiday journey through the snowy landscape of Waterford!" Tickets are sold out but there is still an opportunity to be part of it right here at St. Peter's Church. Watch for details in Worship Bulletins.



ST. PETER'S LUTHERAN CEMETERY

The church cemetery is a great blessing given to us by our earliest church founders. It was important to them to have a place of rest for all St. Peter's Lutheran Church members. Can you imagine how wonderful it will be on the day of resurrection when we all rise together to meet Jesus.

Cemetery plots are available for all St. Peter's church members. As part of your estate planning, please consider purchasing a plot for you and your loved ones. For more information please contact:

George Neumueller at 262-534-3655 or Dan Taggatz at 262-336-7132.

NOVEMBER 2024 MISSION OF THE MONTH

The November and December mission of the month will be combined again this year. We will again participate in the "Friends for Jesus" Toy Drive. Wrapped toys need to be here by December 5th. Additional information is in the narthex. All money raised in the box will go to "Luther Classical College". The mission of Luther Classical College is to be proudly and unapologetically Lutheran in liturgy, theology, and culture. Lutheran. Conservative. Classical. A college for Lutherans. More information about the college is in the narthex.

TO ALL WIDOWED MEMBERS OF ST. PETER'S LUTHERAN CHURCH:

As you may be aware, the Board of Social Ministry desires to start a volunteer group to assist widows in our congregation that may have a need. The Board members understand that you may already have a network of friends and family that you rely on. Our intent is to be an additional back up source for you when it is needed. Volunteer assistance can be for rides to church, groceries, doctor appointments, as well as work around the house.

The process for requesting help is to first call one of our two coordinators.

- 1) Colin or Lauren Szymankiewicz
(262) 475-4721
OR
- 2) Lila Solar (262) 534-7321

Our coordinators will then contact one of our volunteers. The volunteer will then contact you to finalize the time and date of your task.

It is our hope and prayer that this offering is a comfort to you. If you have any questions, please feel free to call me or one of the coordinators.

Yours in Christ

Jeff Ostovich

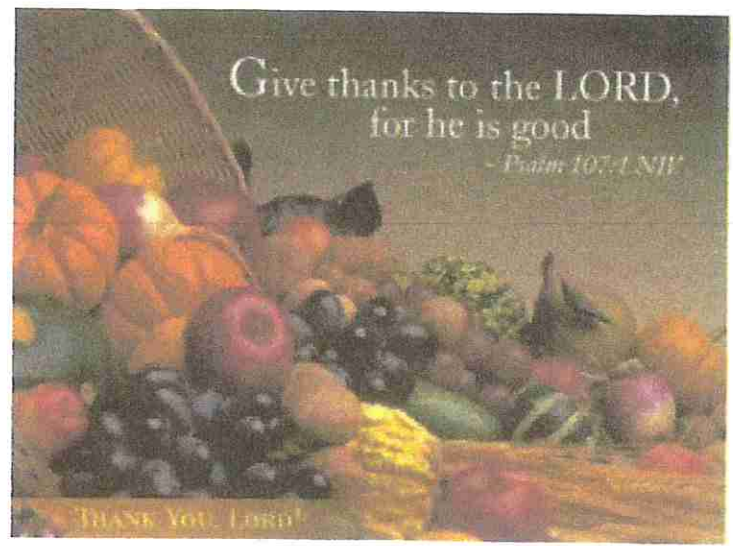
Jeff Ostovich
Chairman
Board of Social Ministry
(262) 514-4620





BOARD OF SOCIAL MINISTRY

The Board of Social Ministry is planning to go caroling to area nursing homes on Saturday December 21st (at around 12:00 pm until?). They need your voices and smiling faces to make this a wonderful experience for all. Please sign up to join us in this joyous way to celebrate the season and share God's love. More information will be provided as the date nears. The sign-up sheet is on the office window.



THIS WON'T BE EASY.

Open your home and show you care if you are:

- 21 years of age or older
- A responsible adult
- Can pass a criminal background check and other background information requirements
- Living in a home that meets all physical environment safety requirements

Foster Care Options:

- General Foster Care Provider
- Emergency Shelter Foster Care Provider
- Respite Care Provider

Foster Care Training:

Foster parents complete training in relation to their level of care certification. Training requirements fall into three categories:

- Pre placement
- Initial licensing
- Ongoing

Foster Care General Information:

- Foster parents can be single, married or in an unmarried relationships
- Foster parents are able to work outside of the home (child care assistance may be available).
- Foster parents receive a monthly stipend based on the level of care they provide.

For more information, contact the Foster Care Recruitment and Retention Specialist, Jessica Moreno at 262.638.6595. You can also visit: doitanyway.org.

DoltAnyway.org

jessica.moreno@racinecounty.com

262-638-6595



Racine County
Foster Care

DO IT ANYWAY.



OFFERINGS



The Board of Stewardship is pleased to offer a new digital option for giving through a company that the church already uses, Vanco. The QR code listed here will allow you to give by scanning the code and then setting up an account. Please note, your annual offering statement will reflect donations given via Vanco and/or your offering envelope. If you already give through Vanco on our website, you do not need to make any changes. There is no charge directly to you for this service. The nominal fee is deducted from your donation.



FLOWERS

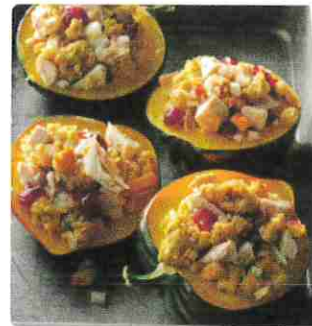
Flowers are a wonderful way to honor a special occasion or remember loved ones and friends who have passed away. The signup sheet is in the Narthex by the coat racks. When signing up for chancel flowers please be sure to have the florist call the church office for delivery days and times.

RECIPE CORNER

EMAIL LIST!



Pastor Conradt periodically sends out an email to church members who want to be informed of important updates. To be included on Pastor's email list, please send an email to Pastor Conradt at pastorconradt@stpeterswaterford.com and include in the subject line: **"Add me to the list."**



Turkey-Stuffed Acorn Squash

Total Time Prep: 10 Min, Bake: 55 Min.

★★★★☆

Test Kitchen Approved

We stuff acorn squash with leftovers like turkey, dressing and cranberry sauce. Make as much or as little as you need to use everything up. — Cindy Romberg, Mississauga, Ontario

Ingredients

- 2 medium acorn squash (about 1 1/2 pounds each)
- 1 small onion, finely chopped
- 2 cups cubed cooked turkey
- 2 cups cooked stuffing
- 1/2 cup whole-berry cranberry sauce
- 1/3 cup white wine or chicken broth
- 1/2 teaspoon salt

Directions

- 1 Preheat oven to 350°. Cut each squash lengthwise in half, remove and discard seeds. Using a sharp knife, cut a thin slice from bottom of each half to allow them to lie flat. Place in a shallow roasting pan, hollow side down; add 1/4 in. of hot water. Bake, uncovered, 30 minutes.
- 2 Meanwhile, place onion in a large microwave-safe bowl; microwave, covered, on high for 1-2 minutes or until tender. Stir in turkey, stuffing, cranberry sauce and wine.
- 3 Carefully remove squash from roasting pan; drain water. Return squash to pan, hollow side up; sprinkle with salt. Spoon turkey mixture into squash cavities. Bake, uncovered, until heated through and squash is easily pierced with fork, 25-30 minutes longer.

Nutrition Facts

1 stuffed acorn squash half: 502 calories, 12g fat (3g saturated fat), 71mg cholesterol, 875mg sodium, 73g carbohydrate (20g sugars, 9g fiber), 27g protein.



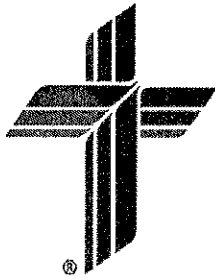
LIBRARY

The Board of Trustees would like to remind the congregation that the church has 2 computers in the library available for use by members of the congregation. Feel free to stop in the office during office hours if you need information about how to sign on. Also, please take a look at the selection of books and movies available to borrow.

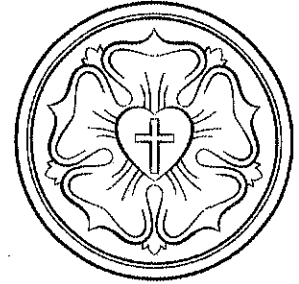
ST. PETER'S 160th ANNIVERSARY WORSHIP SERVICE ...

was held Sunday, September 22nd, 2024. Our guest Preachers were Rev. Dr. Carl Rockrohr (Grandson of the Congregation) and Rev. Paul Rockrohr (Great-Grandson of the Congregation). The service also included Celebrant, Rev. Joshua P.H. Conradt, Organist/Choir Director Mr. Daniel Grosskreuz, and Trumpeter Mr. Matthew Ewert. It was a glorious service to attend followed by an exceptional meal catered by Stowell's.





St. Peter's Lutheran - Rainbow Preschool
November 2024



*Enter into His gates with thanksgiving,
And into His courts with praise.
Be thankful to Him, and bless His name. Psalm 100:4*

The Preschool is growing. We are nearing 9 students. It is not the largest during the 33 year history of Rainbow Preschool, but it is encouraging. I enjoyed seeing the fellowship and hard working spirit of church members and volunteers during the Turkey Dinner. I thank God for our partnership in serving the church and the needs of the community.

O give thanks unto the LORD; for he is good: for his mercy endureth for ever. Who remembered us in our low estate: for his mercy endureth for ever: And hath redeemed us from our enemies: for his mercy endureth for ever. Who giveth food to all flesh: for his mercy endureth for ever. O give thanks unto the God of heaven: for his mercy endureth for ever. Psalm 136:1, 23-26

As we remember with thanksgiving all of God's gifts to us - His Word, Forgiveness, and Sacraments, we live in loving kindness with our neighbors and fellow travelers. As your Preschool Director, I get the joy of welcoming children and greeting their parents at least 5 times a week. I enjoy working with the teachers as I see how they craft a wonderful and thoughtful curriculum and activities for the children. I help set up extra learning opportunities and community connections through the library, recreation department, or at the local senior living places. I get to be around the church during the week and enjoy fellowship through Bible Study, confirmation, and Sunday School.

At that time Jesus answered and said, "I thank You, Father, Lord of heaven and earth, that You have hidden these things from the wise and prudent and have revealed them to babes. Even so, Father, for so it seemed good in Your sight. Matthew 11:25-26

Your help is needed: On Saturday, **December 14, 2024** God has given us an opportunity to be a part of the Waterford Polar Express Bus as a 20 minute stop (3 times that afternoon / evening) starting sometime **after 2 p.m.**

We will be setting up the downstairs as a walk through winter wonderland (highlighting preschool & Sunday School art) and then the parish hall / gym as a craft activity area where we will share the story of St. Nicholas (the historical Christian version) and then give the busload (40 or so) participants a snack. Look for more information to come on how you can volunteer to help in this endeavor. Thank you in advance for your help!

Train up a child in the way he should go, when he is old he will not depart from it.
Proverbs 22:6

The consequences of shallow thankfulness

Newsletter Article – November 2024

Can you imagine a Thanksgiving dinner without turkey, mashed potatoes, gravy and pumpkin pie? I know I can't! To not have these on the menu, or worse, to run out of them with the family around the table, would be a culinary sin of epic proportions. An attempt to serve bratwurst and hamburgers in place of the standard fare would ring hollow and seem totally inappropriate and out of place. It isn't that the food would be bad; brats and burgers are pretty tasty. But not for Thanksgiving — they just don't go together!

This month, as we continue to walk through the stewardship hymn, "Forgive Us, Lord, for Shallow Thankfulness" (*LSB* 788), we turn our attention to verse three. Here, William Watkins Reid, Sr., the man who penned this text, draws attention to some things that do not go along with faithful, thankful stewardship.

Forgive us, Lord, for selfish thanks and praise ...

We see this often with small children. They greedily snatch the candy out of a grandparent's hand, savagely destroy the wrapper, and attempt to stuff the entire delicacy in their mouth in one bite, only to have a parent say, "Tell grandma thank you." This is followed by the pro forma thanks that is uttered between chocolate chews. It isn't really thankfulness; it is simply checking a box to keep mom or dad off their backs.

We never really outgrow this either. Our shallow thankfulness takes the form of feigned humility when praise is being offered. We are thankful that our admirers noticed and called us out: "Look at me! Aren't I special?" No thought at all is given to the fact that the Lord was the One who gave us the ability and opportunity for accomplishment. Our false blush is really only masking our selfish, credit-seeking gain. Once again, we find ourselves idolatrously thanking ourselves.

For words that speak at variance with deeds ...

What carries more weight: words or action? The steward who gives voice to the Gospel in the Divine Service but then lives like a pagan in the world does great damage, not only to others but to the Gospel itself! This is the consequence of failed stewardship. It is idolatry that separates the steward from the Lord.

Worse yet, it also impacts others negatively. When the failed steward is the reference point outside the Christian community, there are those who want no part of being Christian or following the Christ they claim. We see this play out in the impact of overt political activity among Christians based on governing policy as opposed to fidelity to the Word of God. When our lips and our lives are out of sync, like what used to happen with old movie projectors, the impact isn't funny — it obscures the Gospel!

*Forgive our thanks for walking pleasant ways
unmindful of a broken brother's need ...*

Our creature comforts often become an obstacle to faithful stewardship. This is true of both individual and corporate stewardship. Financial stewardship is often limited by our desire to be comfortable and have the latest toys and gadgets. Congregational stewardship is often limited by the desire to focus on what is best for the congregation as opposed to how resources might be best stewarded to reach the community with the Gospel.

When we see someone in need, or broken by the world, we often look at them as freeloaders. We admonish them to get a job. We insist that they learn our language, learn our customs, and make them their own. But this gets in the way of seeing every human being the way that Jesus sees them. Remember, that broken person is one for whom Jesus went to the cross to die and rise. When we are unmindful of these needs, our shallow thankfulness also stands in the way of the Gospel.

This stanza reminds us of the challenge we face. Our hearts are master idol-makers. Our shallow thankfulness threatens our souls and hinders others from seeing Jesus as their Lord and Savior. Stewardship is serious business. It is a task for which we were created. In our sinful failings, we are never relieved of these duties. In our Baptism, we are restored to be stewards of the Gospel. Our faithful stewardship is all about that Gospel.

Forgive us when our thanks are shallow, O Lord! In this month of Thanksgiving, grant us the grace to offer heaping helpings of this stewardship so that others may see Jesus!

Ladies Aid/LWML Newsletter

LWML Fall Rally - 10/12 - Faith Lutheran Church, Sturevant

Thank you for the ingathering of rulers, pens, pencils, glue, crayons, notebooks and note paper for St. John's Lutheran School in Racine.

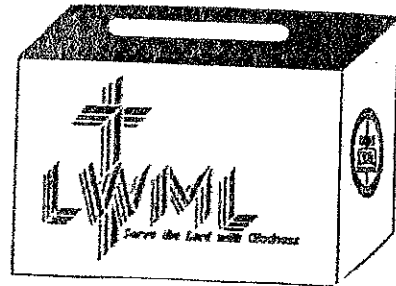
Bonnie Beversdorf also shared about pillowcase dresses. At the rally over a hundred finished dresses will be give to Orphan Grain Train and other ministries serving girls in Africa and around the world.

Bonnie has more kits to be made. If you are interested, contact Winnie Shelton: Ladies Aid/LWM. The dresses will be collected at our spring here at St. Peter's 5/3/2025. (Mark your calendar)

Thank you to Rev. Chris Lockie who led the group in a bible Study about "What really happens when you die".

Lutheran Women's Missionary League (LWML) - As redeemed children of God, Lutheran Women in Mission gives thanks for the opprotunity to serve others as we have been served, to proclaim that Jesus is our Lord and that He came to all nations, and the chance to respond with our Mite Offerings to support God's mission. Our example has been the story of the widow and her mites (found in Mark 12:41-44 and Luke 21:1-4).

We are currently working on Grant #2 - Lutheran Counseling and Family Services of WI Child Therapy Expansion-Mental Health Coverage - \$25,000. Pick up a Mite Box in the Narthex, and check out our bulletin board for current programs.



READY TO
serve

••••• LUKE 1:38 •••••

 **Lutheran Women**
in Mission SUNDAY

Fall Rally - 10/12/24 - Faith Lutheran Church, Sturtevant
Speaker Deaconess Bonnie Beversdorf
Her time spent in the Philippines

Sent, Go, Proclaim

Our Beversdorf family was **SENT** to the Philippines to proclaim God's love. We went to the Philippines and stayed there for a 5-year term, then two 3-year terms. Three of our four sons were born in the Philippines. They were our glorious years of ministry. Even as we struggled with homesickness, the language, and cultural difference, we learned to love the gracious Filipinos.

SENT –What was Isaiah's response to being **SENT** by the Lord?
Isaiah 6:8 "And I heard the voice of the Lord saying, "Whom shall I send, and who will go for us?" Then I said, "Here I am! **Send me.**"

What can we do? Matthew 9:37 & 38 Then he said to his disciples, "The harvest is plentiful, but the laborers are few; therefore **pray earnestly** to the Lord of the harvest to send out laborers into his harvest."

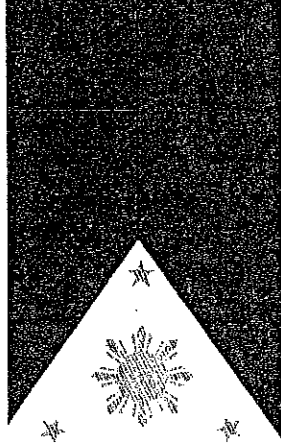
We were told to **GO** to the Philippines. In this place, my husband pastored two congregations. He helped encourage church members to organize Vacation Bible School in the barrios (neighborhoods) under palm trees, and children's ministry at our church. He taught Bible classes and attended youth camps as our family participated with him.

GO - WHERE does God tell us to Go? Mark 16:15 And he said to them, "Go into all the world and proclaim the gospel to the whole creation. Jesus told them to go into all the world to proclaim the gospel.

Proclaim –WHAT are we to proclaim (declare, speak for, teach, preach)? Acts 5:42 And every day, in the temple and from house to house, they did not cease **teaching and preaching that the Christ is Jesus.**

The Philippines – Deaconess Bonnie Beversdorf 10-12-24

1. What colors are used in the Philippine flag? Blue, red, white, yellow
2. Where do school children sing the National Anthem? In the school court yard
3. 10-12-2024 Where is the Philippines located on the world map? South China Sea - 10,000 miles from Midwest USA
4. How many languages are there in the Philippines? 130-195 - we had 9 months of Language school.
5. What is a popular Philippine



dance? Timikling

6. How many islands make up the Philippines? 7,641 - some are not inhabited
7. Name some popular food in the Philippines. Lechon, pancit, halo halo, - helper
8. What percentage of Filipinos are fishermen? 12.7 % - night fishermen use lights
9. What are some fish they catch? Bangus, red snapper, tilapia, lapu lapu (grouper)
10. What animal helps with farming? Carabao - water buffalo
11. How is rice grown on mountain sides? On terraces - family visited - song
12. What are some means of transportation? Jeepeneys, motor cabs - PAL
13. What year did the Lutheran Philippine Mission begin? 1946
14. Who was its leader? Dr. Alvaro Carino - Filipino
15. Which Philippine President declared Martial Law in 1972? F. Marcos
16. What explorer was killed in the Philippines? Magellan

NOVEMBER BIRTHDAYS



Horst Freise	11/01
Charolette Beversdorf	11/02
Esther Racer	11/02
Shelby Jacobs	11/03
Debbie Jutrzonka	11/04
Jenny Kempken	11/04
Kendall Jacobs	11/07
Bryn Schultz	11/07
Terri Jung	11/09
Heidi Frost	11/10
Susan Radmer	11/12
Lynn Gruenewaldt	11/13
Susan Greiner	11/14
Karry Brintnall	11/15
Alaina Berndt	11/16
Richard Gay	11/16
Phyllis McGroarty	11/16
Billie Hayden	11/17
Jodi Sekey	11/17
Timothy Gay	11/18
Kim Acker	11/19
Linda Noll	11/19
Willa Beversdorf	11/20
Roman Nowak	11/22
Marcy Gay	11/23
Greg Poulter	11/23
Dylan Hein	11/25
Kirsten Simonsen	11/25
Silas Morby	11/26
Ken Winkler	11/26
Benjamin Himebauch	11/27
Alexandrea LeMieux	11/27
Caryl Perrin	11/28
Erik Salo	11/28



To the following couples who are celebrating November anniversaries:

Kevin & Ryan Mittelstaedt	11/02
Anthony & Heidi Kin	11/06
Jeffrey & Mary Niederer	11/06
Mark & Dona Grebe	11/10
Philip & Lynn Gruenewaldt	11/13
Corrie & Dawn Blawat	11/26
Gary & Phyllis McGroarty	11/27



November 2024

St. Peter's Ev. Lutheran Church Waterford, WI

Abbreviations
 B.C. Bible Class
 S.S. Sunday School
 M.B.S Men's Bible Study
 W.B.S. Women's Bible Study

Sun	Mon	Tue	Wed	Thu	Fri	Sat
					1	2 Set your clocks back one hour before going to bed. Daylight savings ends 2am Sunday the 3rd.
3 S.S./B.C. -8:15am Worship (S.S. kids sing) -9:30am Cemetery Assoc. Mtg. after Worship	4 Finance 6:00pm Council 7:00pm	5 W.B.S. 1:00pm	6 Youth Catechesis 5:15pm Worship 6:30pm	7	8 Movie Night 6:00pm "Pete's Dragon"	9
10 S.S./B.C. -8:15am Worship -9:30am Voters' Mtg. after worship	11 Sr. Group and LWML 11:00am	12 W.B.S. 1:00pm	13 Youth Catechesis 5:15pm Worship 6:30pm	14	15	16 M.B.S. 8:30am
17 S.S./B.C. -8:15am Worship -9:30am Social Ministry Meeting after worship	18	19 W.B.S. 1:00pm	20 Youth Catechesis 5:15pm Worship 6:30pm Elders 7:30pm	21	22	23
24 S.S./B.C. -8:15am Worship -9:30am Choir practice after Worship	25 Sr. Group 11:00am	26 W.B.S. 1:00pm	27 Thanksgiving Eve Worship 6:30pm	28 Thanksgiving Day 	29	30