

St. Peter's Epistle



January 2025

St. Peter's Evangelical Lutheran Church
145 S. 6th Street, Waterford, WI 53185

Upcoming Events

No Service Jan 1

Epiphany Div. Service
Jan 6 6:30 pm

Movie Night
Jan 10

Men's Bible Study
Jan 18

Be sure to follow us on facebook
and visit our website at
www.stpeterswaterford.com

Sign up for updates by emailing
Pastor Conradt and asking to be
put on the list.

CHURCH

Telephone: 262-534-3639

Rev. Joshua P.H. Conradt, Pastor
pastorconradt@stpeterswaterford.com

Church Office
secretary@stpeterswaterford.com

PRESCHOOL

Telephone: 262-534-6066

Mr. Melvin Beversdorf, Director
director@stpeterswaterford.com

From the Desk of Pastor Conradt

Classical Education: Part III of III

A continuation from last month...

II. CLASSICAL (continued)

"Reading great books imparts wisdom and virtue. In the study of literature, the goal always must be to understand the author's intent and to gain the wisdom he is seeking to teach us. When we have read a work of literature or studied a work of art or philosophy, our objective will be the ability to articulate in our own words—with clarity and brevity—the wisdom we gained from that work. Literature, along with good role models and a robust Christian studies curriculum, is our best tool to accomplish the important goal of character formation.

III. TRADITIONAL

"After a whole century of innovations that have not worked, the traditional classroom has proven its superiority over the modern, child-centered classroom. A traditional education puts an emphasis on basic skills, such as phonics, reading, spelling, math facts, and legible cursive penmanship. All students are trained in accuracy, attention to detail, and mastery. It is an education with a balanced curriculum that emphasizes both the humanities and math and science. Students are carefully prepared for each rung on the educational ladder they are climbing, and students of all ages have similar experiences and expectations. There are formal recitations and memorization exercises in every grade.

This continuity and consistency is invaluable, providing students with clear and concrete expectations. Students thrive and learn in the traditional classroom because it provides a quiet, orderly, purposeful environment.

"Subjects in a traditional classroom are given thorough treatment, not cursory attention. Quick surveys of a subject leave the student unfulfilled. A traditional education wastes no opportunities for learning. Every minute of the school day is precious, and we are duty bound to honor our students by not wasting their time or lowering our standards. A traditional education restores the high standards of the classical tradition within the framework of a warm Christian culture.

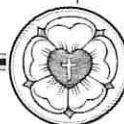
"The ultimate goal of classical Christian education, in addition to teaching generalized skills, is to inculcate wisdom and virtue. Knowledge is a dangerous thing to give without the virtue and values to use it wisely. Classical Christian education is what parents instinctively want for their children. This education gives students the tools to meet the ever-changing world with sanity and the dexterity to adapt and excel, however they choose to make a living. At one time, classical education was the only education. It still is."

END

In Christ,

Pastor Conradt

Lutheran Church



Missouri Synod

OFFICIAL ACTS

WEDDING

Service of Holy Matrimony for the uniting of Paul Terry and Carrie Jacobs was performed on December 14th, 2024.

NEW MEMBERS

Adult Confirmation:

Adam Draves
Paul Hollander

Transfer in:

Patricia Amann
Philip & Mary Conrardt
Matt & Emily Kenitzer
Hannah, Maggie and Heinrich
Paul Terry
Mike Whittow

Profession of Faith:

Deborah Mertins

DEATHS

Linda Winkelman
12/7/1949 11/27/2024



February Newsletter Submissions
Due by January 21st.



FAMILY MOVIE NIGHT



The Board of Parish Education continues to host "Family Movie Night" at 6:00pm in the parish hall. The January 10th movie is *The Star*. There will be some time for "open gym" after the movie. We will have pizza, popcorn, and juice; attendees can sign up to bring a snack to share.

CHURCH BOARDS AND COMMITTEES

Please plan on submitting your financials for 2024 to the Church office by the deadline date of January 17th.



SENIOR GROUP/LWML CHRISTMAS PARTY

Fun was had by all that attended the Senior Group Christmas party and played take-away bingo. A Stowells catered lunch was also enjoyed.

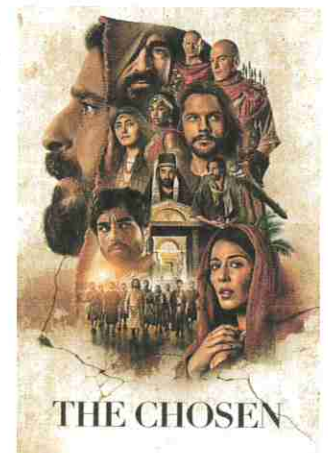


"UNPLANNED"



Join us Sunday Jan. 5th after church service for a delicious sloppy joe sandwich lunch and the movie "Unplanned". A children's movie will be available downstairs. Please sign up in the narthex so we know how many lunches to prepare. Five names will be picked from the sign-up list and be given a free DVD copy of the movie.

"THE CHOSEN" The Board of Parish Fellowship will be showing Season 4 of "The Chosen" starting on January 12th after service and every Sunday following until March 2nd. Watch future bulletins for more details.



JANUARY 2025
MISSION OF THE MONTH



A Place of Refuge Ministries is a network of volunteers and staff who are committed to life and to caring for women facing crisis pregnancy in South Wisconsin. We have a house where moms may stay throughout

their pregnancies and while preparing to transition to independent living arrangements.

Through Refuge House & Advocacy Program we:

- REACH women with needs during pregnancy. Telephone hotline volunteers identify the callers' needs and...
- RECEIVE them into God's care through His people. If needed, bring them into a Refuge House where they may feel safe and loved. If they are already in a safe and independent environment, our volunteer Advocates then work one on one with mothers and...
- REFER them to community resources available for their physical and emotional care. Congregations throughout South Wisconsin...
- RESPOND by providing what is not available in the community by sharing God's love for us in His Son Jesus Christ. And every day we...
- REJOICE in the opportunity to share the gospel and share in the joy of a baby born.

Refuge House, located in Milwaukee, is looking for the following donations. (donation area will be located in the narthex early January)

- **Refuge House Needs**
- All Free & Clear Laundry Pods
- Aluminum Foil
- Baby Monitors
- Baby Wipes
- Burt's Bees Facial Wipes
- Clothes Baskets
- Coloring Books
- Dawn Dish Detergent
- Diaper Genie Refills
- Finish Dishwashing Pods
- Large Plastic Storage Tote
- Laundry Stain Remover
- New Tarp and Ropes for Playset
- Nursing Pads
- Paper Towels

- Plastic Storage Bags
- Tape Measures
- Two Folding Picnic Tables
- Watercolor Paints, Paper & Brushes
- Ziploc Freezer, Sandwich, and Snack Bags

Donate to Our Advocacy Ministry - Moms & Babies

- Baby Powder
- Bibs
- Infant Board Books
- Infant Headbands
- Infant Sleepers
- Infant Socks
- Infant Toys
- Infant Wash Clothes & Bath Towels
- Instant Read Thermometers



BOARD OF SOCIAL MINISTRY

The Board of Social Ministry would like to thank everyone who joined in the fun and shared their wonderful voices for Christmas caroling as they spread the joy of Jesus birth to area nursing homes on December 21st.

TURKEY DINNER COMMITTEE MEETING

A January 16th, 5:30pm meeting is being planned to review the requests that have been submitted to the committee for non-budgeted projects and expenses from various groups. Those involved in the planning of the turkey dinner please attend.



OFFERINGS



The Board of Stewardship is pleased to offer a new digital option for giving through a company that the church already uses, Vanco. The QR code listed here will allow you to give by scanning the code and then set up an account. Please note, your annual offering statement will reflect donations given via Vanco and/or your offering envelope. If you already give through Vanco on our website, you do not need to make any changes. There is no charge directly to you for this service. The nominal fee is paid by the church.



EMAIL LIST!

Pastor Conradt periodically sends out an email to church members who want to be informed of important updates. To be included on Pastor's email list, please send an email to Pastor Conradt at pastorconradt@stpeterswaterford.com and include in the subject line: **"Add me to the list."**



FLOWERS

Flowers are a wonderful way to honor a special occasion or remember loved ones and friends who have passed away. The signup sheet is in the Narthex by the coat racks. When signing up for chancel flowers please be sure to have the florist call the church office for delivery days and times.



HANDICAPPED PARKING

On the East side of our building there are several parking spaces marked for handicapped parking only. We remind you that by state law, these spaces can be used only by individuals displaying a handicapped motorist sign in their car window or having the prefix "dis" on their license plate. Please respect the rights of our disabled members and guests!

LIBRARY

The Board of Trustees would like to remind the congregation that the church has two computers in the library available for use by members of the congregation. Feel free to stop in the office, during office hours, if you need information about how to sign on. Also, please take a look at the selection of books and movies available to borrow.



PLEASE CALL



If you should find yourself hospitalized or confined to your home for health reasons, please notify the church office. Pastor can only minister to your needs if he is aware of your situation. Pastor is eager and willing to make regular visits with you, but he can do so only if you let him know.

USED EYEGLASSES

& HEARING AIDS



Please consider depositing your used eyeglasses & hearing aids in the container provided in the narthex. By donating these used items, someone is seeing and hearing the world differently. The Lions Club distributes these items to those in need.



PRAYER REQUESTS

If you would like to request a prayer on Sunday morning for birthdays, anniversaries, etc., please call the church office. We would be happy to share with you those special days in prayer.



MOVING OR NEW PHONE NUMBER?

If you are moving or have a new phone number please notify the church office so we can update our records. Thank you.

~RECIPE CORNER~

Wondering what to do with that leftover ham and ham bone?? This is a great recipe.

Split Pea Soup

1 pound (2 ¼ cups) green split peas
1 meaty ham bone (1 ½ pounds)
1 ½ cups sliced onion
¼ teaspoon dried marjoram, crushed
1 cup diced celery
1 cup diced carrots



Cover peas with 2 quarts cold water and simmer gently for 2 minutes; remove from heat; cover and let stand 1 hour. Add bone, onion, 1 teaspoon salt, ½ teaspoon pepper, and marjoram. Bring to boil; cover, reduce heat, and simmer (don't boil) 1 ½ hours. Stir occasionally. Remove the bone; cut off meat and dice. Return meat to soup; add vegetables. Cook slowly uncovered, 30 to 40 minutes. Serves 6 to 8.



St. Peter's Lutheran - Rainbow Preschool



God is faithful, by whom you were called into the fellowship of His Son, Jesus Christ our Lord." 1 Corinthians 1:9

Thank the Lord! So much to look forward to in 2025...

Thank you! Thank you! Thank you! To all the volunteers who helped donate, make snowflakes, make cookies, prepare, decorate, and serve our Polar Express guests on 12/14, it was a wonderful time that you created for the visitors. We had about 160 guests on 3 "trains" on a lovely Saturday afternoon. Thanks for all your support and dedication! It was truly appreciated.



I thank my God always concerning you for the grace of God which was given to you by Christ Jesus, that you were enriched in everything by Him in all utterance and all knowledge. 1 Corinthians 1:5

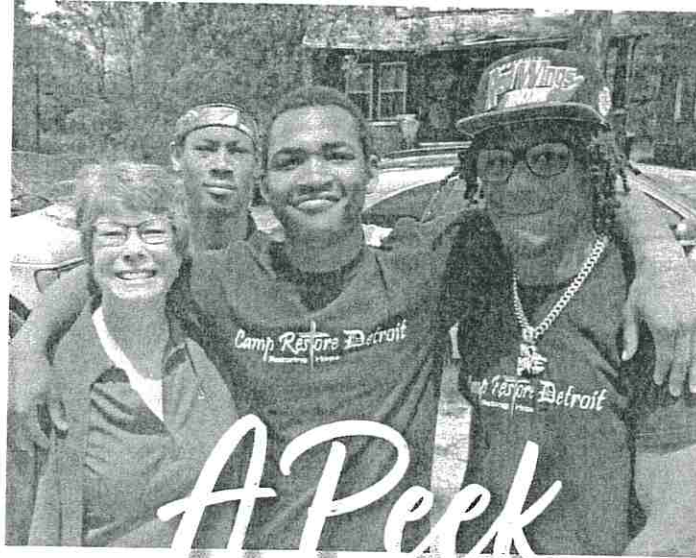
As we look back on 2024 with fond memories and as we relish in the celebration of the birth of Jesus, our Savior, we begin to look forward. May this new year bring about the assurance of your faith in Christ that will last for all eternity. May it also bring new beginnings as God leads you on the journey of faith here at St. Peter's Lutheran Church.

At Rainbow Preschool, we are beginning the new year by now enrolling for Fall 2025. We have made our tuition a monthly rate due to an implementation of a new Smartcare management system to help simplify costs. We are going to 2 days (Tuesday / Thursday), 3 days (Monday / Wednesday / Friday), and 5 day options to help with cohesiveness of curriculum as well as continuity for children. If you know someone in need of 2K, 3K, or 4K Preschool, please refer them to the director for a tour. **Thank you!**

For since, in the wisdom of God, the world through wisdom did not know God, it pleased God through the foolishness of the message preached to save those who believe. For Jews request a sign, and Greeks seek after wisdom; but we preach Christ crucified, to the Jews a stumbling block and to the Greeks foolishness, but to those who are called, both Jews and Greeks, Christ the power of God and the wisdom of God. Because the foolishness of God is wiser than men, and the weakness of God is stronger than men. 1 Corinthians 1:21-25

Lutheran Woman's Quarterly for Winter is coming soon. Theme: Tell Your Story.

Come and hear: all you who fear God; let me tell you what he has done for me (Psalm 66:16 NIV).



At a Mite in Mission

BY LWML VICE PRESIDENT OF GOSPEL OUTREACH KAREN MORRISON

And I tell you, ask, and it will be given to you; seek, and you will find; knock, and it will be opened to you (Luke 11:9).

In February 2024, I met staff and volunteers from Camp Restore Detroit. They made such an impression on me that I wanted to visit Camp Restore.

Two weeks later, the LCMS Foundation informed the LWML Board of Directors that a gift was coming, but it was restricted to "brick and mortar" mission grant work. As in everything with which God blesses us, four mission grants this biennium, including Camp Restore Detroit, met the requirements, and the amount needed was almost the total amount of the gift.

In May 2024, I was on my way to Camp Restore to present the mission grant payment. In just three months, God opened the door for me and granted my request — a visit to Camp Restore Detroit.

Seeing mites in action firsthand is a blessing that I have been able to experience several times as I serve as the Vice President of Gospel Outreach for LWML. At the national level, it is a priority to present as many mission grant checks as possible in person. Part of my job is to coordinate those presentations. The reaction from each recipient is overwhelming appreciation to the Lutheran Women in Mission everywhere, not only for their mite offerings, but, especially, for the prayer support that they give.

Grant presentations are varied and exciting. My first grant check presentation was at the 2022 LWML Kansas District Convention, given to Mercy Medical Care for Tanzania, Mwadui Lutheran School and Community. During the 2021–2023 biennium, when I presented the check for Expanding God's Love in Uganda as part of a Day of Thanksgiving celebration for missionaries at the LCMS International Center, I spent the day meeting many staff members who wanted to say, "Thank you!" to LWML.

2024 has been a whirlwind of mission grant payments. Being part of the process of providing funds to help spread the Gospel brings an awe that can be emotionally overwhelming. We are fulfilling the Great Commission with each mission grant check we deliver.

I think back to that trip to Camp Restore Detroit — amazing! Entire neighborhoods are being revitalized and reenergized with positivity. Old houses are being torn down. Trash filled lots are being cleaned up and turned into parks. Community gardens teach children how to be self-sustaining while they dig in the dirt. God is on the move in Detroit.

I have been blessed to be a 'mite' in the overall mission goal that is serving ministries at home and across the ocean. *Q*

Would you like to receive your personal copy of Lutheran Woman's Quarterly? \$6 a year.

Order by end of February. Contact Winnie Shelton dgshelton02@gmail.com or church office.



JANUARY BIRTHDAYS

Melissa Dodulik	1/02
Lillian Dolezal	1/03
James Gumprecht	1/03
Carol Wolfgram	1/04
Charlotte Jung	1/05
Diana Nowak	1/05
Lisa Salo	1/05
Julie Campbell	1/06
Holly Handeland	1/06
Andrew Handeland Jr.	1/07
Juliana Taggatz	1/07
Kathe Oelkers	1/08
Ruby Gobel	1/10
Terry Jacobs	1/10
Andrew Salo	1/11
Kaitlyn Buchholtz	1/13
Ted Myers	1/13
Nils McDermott	1/15
Michael Dessecker	1/18
Nora Mehring	1/18
Jarmen Czuta	1/19
Jacob Gilgenbach	1/20
Logan Mittelstaedt	1/22
Bernd Kampe	1/23
Chelsey Walbrant	1/23
Diane Mehring	1/24
Joseph Multhauf	1/28
Rose Beversdorf	1/30
Jackson Keeling	1/30
Gabriella Salas	1/30
Diana Storm	1/31

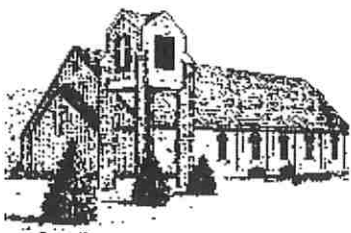


HAPPY ANNIVERSARY

To the following couples who are celebrating January Wedding Anniversaries.

Ted & Jill Jacobs	1/16
Dwight & Debbie Jutrzonka	1/17
Jarmen & Tina Czuta	1/23





Abbreviations
 B.C. Bible Class
 S.S. Sunday School
 M.B.S Men's Bible Study
 W.B.S. Women's Bible Study

January 2025

St. Peter's Ev. Lutheran Church Waterford, WI

Sun	Mon	Tue	Wed	Thu	Fri	Sat
			1	2	3	4
			No Worship Service			
5	6	7	8	9	10	11
S.S./B.C.8:15am Worship 9:30am The movie "Unplanned" after worship	Epiphany Divine Service 6:30pm	W.B.S. 1:00pm	Youth Catechesis 5:15pm No Worship Service		Movie Night 6:00pm "The Star"	
12	13	14	15	16	17	18
S.S./B.C.8:15am Worship 9:30am "The Chosen" Season 4, Ep.1 after worship	Sr. Group and LWML 11:00am Finance 6:00pm Council 7:00pm	W.B.S. 1:00pm Preschool Open House 4:00-6:00pm	Youth Catechesis 5:15pm Worship 6:30pm Elders 7:30pm			Men's Bible Study 8:30am
19	20	21	22	23	24	25
S.S./B.C.8:15am Worship 9:30am "The Chosen" Season 4, Ep.2 after worship		W.B.S. 1:00pm	Worship 6:30pm			
26	27	28	29	30	31	
S.S./B.C.8:15am Worship 9:30am "The Chosen" Season 4, Ep.3 after worship	Sr. Group 11:00am	W.B.S. 1:00pm	Youth Catechesis 5:15pm Worship 6:30pm			